

FALLING INTO YOU

PIANO • VOCAL • CHORDS

Celine

DION



CONTENTS

ALL BY MYSELF 10

BECAUSE YOU LOVED ME 5

CALL THE MAN 15

DECLARATION OF LOVE 82

DREAMIN' OF YOU 76

FALLING INTO YOU 22

FLY 72

I DON'T KNOW 27

I LOVE YOU 46

IF THAT'S WHAT IT TAKES 32

IT'S ALL COMING BACK TO ME NOW 56

MAKE YOU HAPPY 64

SEDUCES ME 41

Editor's Note:

It took a lot of people working closely together and spending a lot of time to produce Celine Dion's new songbook, *Falling Into You*. After weeks of arranging, engraving, editing, photo clearances, art layouts and final approvals, the book is finally released.

Warner Bros. Publications and I would like to personally thank Ben Kaye of Feeling Productions for his guidance, professionalism, patience and most of all his faith, enabling us to produce this long-awaited songbook.

This project has been a great experience and one that I am proud to have been associated with.

Carol Cuellar



Celine
Dion

ALL BY MYSELF

Words and Music by
Eric Carmen and Sergei Rachmaninoff

Slowly ♩ = 58

Verse:

A



Dm6/A



A



When I was young I ne-ver need-ed an - y-one, —

A9/G



F7sus4



F7



Bm



Dm



Aadd9/C#



Bm7b5



E/G#



and mak-ing love was just_ for fun. —

Those days are gone. —

A



Dm6/A



A



Liv - in' a - lone, —
Hard to be sure, —

I think of all the friends I've known, —
some-times I feel so in - se - cure, —

Em/G

F7sus4

F7b9

Bm

Dm

Dm6

but when I dial the te - le - phone, — no - bo - dy's home.
and love so dis - tant and ob - scure, — re - mains the cure. —

Aadd9/C#

F7sus4

F7

rit.

B7

Dm/E

E7sus4

E7

Chorus:
a tempo

A

All by — my - self, —

C#m7

4tr

Em/G

F7sus4

F7

Bm

Dm/F

E7

don't wan-na be all by — my - self an - y-more.

A

C#m7

4tr

Em/G

F7sus4

F7

All by — my - self, — don't wan-na be all by — my - self —

Freely (♩ = 108)

Bm Dm C#7 Cmaj7 B7 Em D/F# G

an-y-more.

rit. accel.

Am F#m7b5 B11#9b13 B7/D# Em D/F# G Am F#m7b5 B11#9b13 B7/D#

Em D/F# G C#7/E# C#7 F#m7b5 B7

Em7b5 A7 rit. A

Slowly ♩ = 58

rit.

Dm6/A **A**

When I was young I ne-ver need-ed an-y-one, —

A9/G **F7sus4** **F7** **Bm** **Dm6**

and mak-ing love was just — for fun. — Those days — are gone.

rit. **A/C#** **Bm7/5** **E/G#** **a tempo** **A** **C#m7** **4tr**

All by — my — self, — don't wan-na be

Em/G **F7sus4** **F7** **Bm** **Bm7/5**

all by — my — self an - y - more. —



Musical notation for the first system, including treble and bass staves. The treble staff features a melodic line with a long note and a trill. The bass staff provides harmonic accompaniment with chords and moving lines.



Musical notation for the second system. The treble staff includes triplets and a dotted line indicating a continuation. The bass staff continues the accompaniment.



Musical notation for the third system, featuring the lyrics: "All by my self, don't wan - na live,". The treble staff shows the vocal line with lyrics. The bass staff provides accompaniment.



repeat ad lib. and fade



Musical notation for the fourth system, featuring the lyrics: "oh.". The treble staff shows the vocal line with lyrics. The bass staff provides accompaniment.

BECAUSE YOU LOVED ME

(THEME FROM "UP CLOSE & PERSONAL")

Words and Music by
Diane Warren

Slowly ♩ = 76

Verse:



1. For all those times you stood by me, for all the wings and made me fly, you touched my

mf

G^b



B^bm7



truth that you made me see, for all the joy you brought to my life, for all the hand, I could touch the sky. I lost my faith you gave it back to me. You said no

A^bsus



Fm7



wrong that you made right, for every dream you made come true, for all the star was out of reach, you stood by me and I stood tall. I had your

6
G♭maj7

E♭m7/Ab



love I found in you, I'll be for - ev - er thank - ful, ba - by.
love, I had it all. I'm grate - ful for each day you gave me.

C♭6



B♭m7



E♭m7



You're the one who held me up, nev - er let me fall.
May - be I don't know that much, but I know this much is true.

G♭m7



E♭m7/Ab



You're the one who saw me through, through it all. } You were my
I was blessed be - cause I was loved by you. }

§ Chorus:



strength when I was weak, you were my voice when I could - n't speak. You were my

B \flat m7A \flat susA \flat

eyes when I could-n't see. you saw the best there was in me. lift-ed me

Fm7

G \flat maj9C \flat maj7

up when I could-n't reach. You gave me faith 'coz you be-lieved I'm

E \flat m7/A \flat To Coda $\text{\textcircled{C}}$ 1.D \flat E \flat m7/A \flat

ev-ry-thing I am be-cause you loved me. 2. You gave me

2. D \flat

Bridge:

F7/A

B \flat m7

loved me. You were al-ways there for me, the ten-der wind that car-ried me. A

F7/A

B♭m7

light in the dark... shin - ing your love... in - to my... life... You've

E♭m7

D♭/F

been my in - spi - ra - tion... through the lies... you were... the truth... My

E♭m7/Ab

D.S. al Coda

world is a bet - ter place be - cause... of you... You were... my

♩ *Coda*

D♭

Fm7/B♭

E♭

loved... me... You were... my strength when I... was weak, you were... my



voice when I could- n't speak. You were_ my eyes when I could- n't see, you saw_ the



best there was_ in me, lift- ed_ me_ up when I could- n't reach. You gave. me



faith 'coz you_ be- lieved... I'm ev- ery- thing_ I am be- cause_ you



loved_ me. I'm ev- ery- thing_ I am be- cause_ you loved_ me...

CALL THE MAN

Words and Music by
Andy Hill and Pete Sinfield

Slowly ♩ = 63

Chord diagrams: F/A, Bb, E/G, Ab 4tr, F/A, Bb

Chord diagrams: E/G, Ab 4tr, [Bb], Bbmaj7

Chord diagrams: Bb, E/G, Bb, Eb/Bb

Verse:

Chord diagrams: Bb, F/A, Gm 3tr, Eb, Cm7 3tr

1. Close the door, _____ shut the world a - way, all the fight's gone... from this
 2. I close my eyes, _____ I re - mem - ber when your sweet love... filled this

Bb/F

F

Bb

F/A

Gm

Eb

wound - ed_ heart. A - cross the floor_____ dreams and sha-dows play,
 emp - ty_ room. The tears I cry_____ won't bring it back a-gain,

Cm7

D

Chorus:

Dm7

Gm

like wind blown re - fu - gees. Call the man who deals_
 un-less the lone - ly star_ should fall._____ }

Cm7

F

Dm7

Gm

— in love be - yond_ re - pair,_____ he can_ heal_____ the world_

Cm7

F

Dm7

Gm

— of hearts_ in need_ of care._____ Shine a light a - head,

Cm7 ^{3tr} F Dm Eb

when the next step is un-clear,

Cm7 ^{3tr} F 1. Bb Eb

call the man, he's need-ed here, mm.

Bb Eb 2. Bb

need-ed here, need-ed in the

Bridge:

E^bB^b/D

cha - os and con - fu - sion from the plains to cit - y hall, — need-ed where the

E^bB^b/F

F



proud who walk the wi - re are set — to fall.

E^bmaj7B^b/D

(Guitar solo. . .)

C^m7B^b

Gm 3fr

Eb

Bb/F

F11

Eb

Chorus:
Dm7

Gm 3fr

..... end solo) Oh call the man who deals.

Cm7 3fr

F

Dm7

Gm 3fr

in once up - on a time, may - be he can mend.

Cm7 3fr

F

Dm7

Gm 3fr

this bro - ken heart of mine, shine a light up a - head.

Cm7 3tr F Dm Eb

now the fu - ture is - n't clear, call the man, _____

Cm7 3tr F Bb Eb/G

call the man, he's _____ need-ed here.

Bb Eb/G F7 Bb

Call the man, he's _____ need-ed here.

Bb F/A Gm 3tr Eb Cm7 3tr Bb/F F

Vocal ad lib.

Vocal ad lib.

*Vocal ad lib.*

He's need-ed here, — yeah, yeah. —

1.

2.
N.C.

He's need-ed here,

— right here, right now, yeah.

DECLARATION OF LOVE

Words and Music by
Michael Jay and Claude Gaudette

Moderate rock ♩ = 120

N.C.

E7/G#

A



Come on,

Gmaj7

F#m7

E7/G#



yeah,

oh,

A

E7/G#

Baug

E7

A/E

E



oh,

A/E E7 A/E E N.C.

ah.

Verse:

E7 A/E E A/E E7 A/E E

1. You're my knight in ar-mour, the he-ro of my heart.
 2. Just like Ju-li-et be-longed to Ro-me-o,

E7 A/E E A/E

When you smile at me I see
 you can stay pre-pared that I

E7 A/E E

a true world go up.
 won't be let-ting you go.



C G/B Am7

The riv - er is get - ting deep, — be - lieve — it, you're all — these arms of mine — wan -
In the heat of the night, — so right, — you taste — my sweet - ness on your

G C G/B

1. — na hold, all wrapped up with a riv - er ba - by, I'm giv -
lips.

Am7 D11 To Next Strain 2. A7/C# Cm G/B

— ing you — this heart — of gold. I'll make it bet - ter than you —

Bb9 Am7 A7 G7/B C G/D

— ev - er dreamed, and the rest — of your life will be just — like this, — ba - by. —

G C/G G C/G

So lis - ten up, it's you I trust, I feel mag - ic ev - ery time that we touch.

G C G Em7

I pledge al - le-giance to the heav - ens a - bove, to - night.

to Coda ⊕

A7 Baug 1. E7 A/E

— to you ba - by, I make my dec - la - ra - tion of love, — hey —

E A/E E7 A/E E N.C.

— of love. —

2.
D11

G C/G G C/G

— my dec - la - ra - tion of love. — So lis - ten up, it's you I trust, — I feel mag -

G C

- ic ev - ery time that we touch. — I pledge al - le - giance to the

G Em7 A7 Baug

heav - ens a - bove, — to - night — to you ba - by, I make — my dec - la - ra - tion of love,

E7

— yeah — of love, — yeah, —

A

oh, _____

N.C. Gmaj7 F#m7 N.C.

no, _____

E7 A/E E A/E

I'm talk-ing to you, _____ ba - by, _____ yeah, _____ what you got-ta know boy, _____

E7 A/E E

oh yeah. _____

 CODA

D11



N.C.

— my de - cla - ra - tion of love. —

G



C/G



G



C/G



So lis - ten up, it's you I trust, I feel mag -

G



C



- ic ev - ery time that we touch. I pledge al - le - giance to the

G



Em7



A7



D11

*repeat and fade*

heav - ens a - bove, to - night to you, ba - by, I make my de - cla - ra - tion of love.

DREAMIN' OF YOU

Words and Music by
Aldo Nova and Peter Barbeau

Moderately slow ♩ = 84

Chord diagrams: A, E

Do do do do do do do do do do do do do do

mp

Chord diagrams: A, E, A

do do do do do do do do do do do do do do

Chord diagrams: E, A, G#m, F#m, E, B

Amaj7



Ly-in' in my bed, thoughts in my head, vi-sions of you, but I can't get through the night.
 (2.) got in the car, but I did - n't get far, 'cause the ra - di - o played ev-ery song that I sang with you. ...

mf

Emaj7



So,

Amaj7



pick up the phone, I know you're home. You're play-in' with my heart, and you know that it just ain't
 Yes-ter - day's gone, and it may be _____ true, but you know that I'll nev - er get o - ver

Emaj7



A



right. _____ It's just a game of love, love, love,
 you. _____ It's just a game of love, love, love.

Gfm



F#m7



A



B



and e-ven though it's hard, ba-by, I can ne-ver give you up. You're the
 and e-ven though it hurts me ba-by, I can ne-ver give you up, 'cause you're the

Chorus:

E



C#m



Gfm



one I'm dream-in' of, I can't live with-out your love to-night,

A



E



C#m



and it's you that I a-dore, you're the one that I live for, in-side-

Gfm



A



Amaj7sus2



of you, I'm dream-in' of. 2. So I
 dream-in' of



you. You gave me love, _____ love gave us hope _____ and strength to car-



- ry on, _____ and you, you gave me faith, _____ when I was



fall - ing down, _____ you would pick me up, my love. _____

(Inst. solo ad lib. ...)



E Cfm 4fr Gfm 4fr A

You're the

G D/F# Em

one I'm dream-in' of, I can't live with-out_ your love_ to - night, _____

C G D/F#

— and it's you that I a - dore, you're the one that I_ live for, _____

Chorus:
Em C G

in - side. Ba - by, ba - by, ba - by, you're the one I'm dream-in' of, I can't

Em Bm C

live with - out your love to - night, _____ and it's

Detailed description: This system contains the first three measures of the song. The guitar part features chords Em, Bm, and C. The vocal line has a melodic line with lyrics 'live with - out your love to - night, _____ and it's'. The piano accompaniment consists of a steady eighth-note bass line and chords in the right hand.

G Em Bm

you that I a - dore, you're the one that I live for, in - side. _____

Detailed description: This system contains the next three measures. The guitar part features chords G, Em, and Bm. The vocal line continues with 'you that I a - dore, you're the one that I live for, in - side. _____'. The piano accompaniment continues with the same rhythmic pattern.

C Csus2 C

Ba - by, - I'm dream-in' - of you. _____ Do do do do do do do do -

Detailed description: This system contains the next three measures. The guitar part features chords C and Csus2. The vocal line has 'Ba - by, - I'm dream-in' - of you. _____ Do do do do do do do do -'. The piano accompaniment continues with the same rhythmic pattern.

G C G

do do do do do do do do do do do do do do.

repeat and fade

Detailed description: This system contains the final three measures. The guitar part features chords G and C. The vocal line has 'do do do do do do do do do do do do do do.'. The piano accompaniment continues with the same rhythmic pattern. The system ends with a double bar line and the instruction 'repeat and fade'.

FALLING INTO YOU

Words and Music by
Marie Claire D'Ubaldo, Billy Steinberg
and Rick Nowels

Moderately $\text{♩} = 96$



1. And in your

mp

(with pedal)

Verse:



eyes. I see rib - bons of col - or.
to let you in here.



I see us in - side of each oth - er.
Now, I have learned love can't be made in fear.

Am/C

Am7

B♭maj7

I feel my un - con - scious merge - with yours _____ and I hear a voice -
 The walls be - gin - to tum - ble down _____ and I can't e -

Am

B♭maj7

_____ say _____ "What's his _____ hers." _____ } I'm fall - ing in - to
 _____ ven _____ ground. _____ }
cresc.

§ Chorus:

Gm9

C

Gm9

C

you. This dream could _____ come true, _____ and it feels _____
mf

Gm9

C

1. Dm

_____ so good fall - ing in - to _____ you. 2. I was a - fraid _____
dim. *mp*

2.3.
Dm



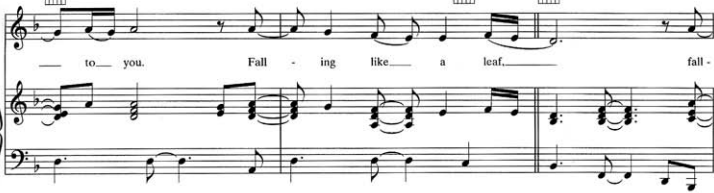
C



B^b maj7



to you. Fall - ing like a leaf. fall -



C



Am



B^b



Gm9



- ing like a star, find - ing a be - lief



To Coda

Dm



fall - ing where you are.



C



B^b



C



Dm



Catch me, don't let me drop! Love me, don't ev - er stop!



Gm9



C



Am7



Bb

*(Instrumental solo...)*

Gm9



C



Dm

*...end solo)*

3. So. close your

*dim.**mp*

Verse:

C/D



Dm



C/D



eyes

and let me

kiss you.

And while

Dm



C/D



Gm7/D



Am7/D

*D.S. § al Coda*

you sleep

I will miss you.

Oh, I'm fall - ing in - to

cresc.

Coda

Dm

B \flat

you are... Fall -

C

Dm

- ing in - to you... fall - ing in - to you...

B \flat maj 7

C

Dm


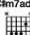
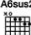
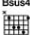
fall - ing in - to you...

dim. *mp*


FLY

Words and Music by
J.J. Goldman and Phil Galdston

Slowly $\text{♩} = 58$

Esus2  C#m7add4  A6sus2  4fr Bsus4  2fr

mp *molto rit.*



Verse:
a tempo



1. Fly, fly lit - tle wing,
2. Fly, fly pre - cious one,

fly be - yond i - ma - gin - ing, -
your end - less jour - ney has be - gun,




the soft - est cloud, the whit - est dove,
take your gen - tle hap - pi - ness,

up - on the wind of heav - en's love.
far too beau - ti - ful for this.



Past the pla - nets and the stars, leave this lone - ly world of ours,
Cross ov - er to the oth - er shore, there is peace for - ev - er - more,

F#m7sus4

Bsus4

es - cape the sor - row and the pain, and fly a - gain...
but hold this me - m'ry, bit - ter - sweet, un - til we meet... }

Chorus:

E

Fly, fly do not fear, don't waste a breath, don't shed a tear,

C#m7

4fr

your heart is pure, your soul is free, be on your way, don't wait for me.

A



A - bove the u - ni - verse you'll climb, on be - yond the hands of time,



F#m7sus4



the moon will rise, the sun will set, but I won't for - get.

Bsus4




E



Oh



C#m7



Oh



A



Oh



Bsus4



2tr

rit.

Ah



slower

Esus2



Fly, fly lit - tle wing, fly where on - ly an - gels sing, ..



C1m7add4



Asus2



N.C.

fly a - way, the time is right, ___ go now, find the light.

rit.



I DON'T KNOW

27

Slowly $\text{♩} = 60$

Words and Music by
J.J. Goldman, J. Kapler
and Phil Galdston

Em9add4

Em

A musical score system for the first part of the song. It features a vocal line in treble clef and a piano accompaniment in grand staff (treble and bass clefs). The key signature is one sharp (F#) and the time signature is 12/8. The tempo is marked 'Slowly' with a quarter note equal to 60 beats per minute. The first measure of the vocal line is a whole rest. The piano accompaniment begins with a half note in the bass clef and a half note in the treble clef. The lyrics 'A moun-tain of stone,— a door of' are written below the vocal line.

A moun-tain of stone,— a door of

D

Em

C

D

Em

steel, can't stand in my way,— I'd go_ on.____ Bru-tal ma -

A musical score system for the second part of the song. It features a vocal line in treble clef and a piano accompaniment in grand staff. The lyrics 'steel, can't stand in my way,— I'd go_ on.____ Bru-tal ma -' are written below the vocal line.

Em

D

- chines, un - bend - ing laws,____ can't slow
heart can blow me down,____ but I get right

A musical score system for the third part of the song. It features a vocal line in treble clef and a piano accompaniment in grand staff. The lyrics '- chines, un - bend - ing laws,____ can't slow heart can blow me down,____ but I get right' are written below the vocal line.

Em C D Em

me down, _____ I'd go on _____ I've learned how to deal,
up, _____ and I stand my ground. _____ I've tast - ed fear,

G D Am

_____ and when _____ to fight, _____ I know what's real, _____ I know what's
_____ my share _____ of pain, _____ the wast - ed tears _____ of love in

Em D/F# G

right. _____ I'm not a - fraid, _____ a wound - ed
vain. _____ I've held you tight, _____ pushed you a -

D C

dove, _____ I can be ten - der _____ in a world
- way, _____ now with all _____ my might, _____ I beg you

G D Em

so tough. }
to stay. }

I'm sure I could face _____ the bit - ter

D Em C D

cold, _____ but life with - out _____ you, _____ I don't know.

Em

C G D



2. The winds of the

I know what I want,

cresc.



I know_ what I need,

but there's just one



thing

I must be - lieve.

Deep in the



night

by a dy - ing flame,

you will be

C G

there _____ when I call your name. _____ I'm sure I

Em D

could face _____ the bit - ter cold, _____ but life with - out _____

Em C D Em C D

— you, I don't know, I don't know,

Em C D Em C D

— I don't know, — I don't know.

repeat ad lib. and fade

I LOVE YOU

Words and Music by
Aldo Nova

Slowly $\text{♩} = 60$
N.C.



Do do do do do, ___



F#m

do do do do do, ___

do do do do do, ___



Verse:



do do do do do, ___

1. I must be cra - zy now, ___

B/D#

4fr

C#m

4fr

may-be I dream too much, _____ but when I think of you, _____ I

B

A

E

long to feel your touch, _____ to whis-per in your ear _____

B/D#

4fr

C#m

4fr

words that are as old as time, _____ words on - ly you would hear, _____ if

B

A

G#m7

4fr

on - ly you were mine. _____ I wish I could go back to the ver - y first day I

C#m 4fr

F#m

saw you, — should have made my move when you looked in my

B

G#m7 4fr

eyes, — 'cause by now I know that you'd feel the way that

C#m 4fr

F#m

I do, — and I'd whis-per these words as you'd lie here — by my

B

A

Chorus:

E

B/D# 4fr

side, oh, — I love

C#m 4fr F#m

you, please say you love me

B G#m 4fr

too, these three words, they could change our lives for -

C#m 4fr F#m

- ev - er, and I pro-mise you that we will al - ways be to -

B A#maj7 E

- geth - er, till the end of time. Do, do, do, do, do, do

C#m7



F#m



Verse 2:

B



B11



E



B/D#



C#m



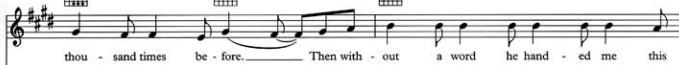
B

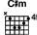
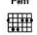


A

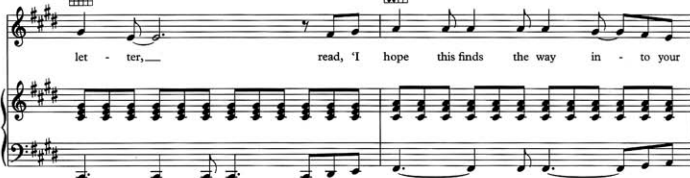


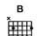
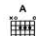
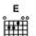
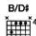
G#m7




C#m 4fr  F#m 

let - ter, — read, 'I hope this finds the way in - to your



B  A  Chorus: E  B/D# 4fr 

heart,' it said. — I love



C#m 4fr  F#m 

you, — please say you love me



B  G#m 4fr 

too, these three words, they could change our lives for -



C#m 4fr F#m

- ev - er, — and I pro-mise you that we will al - ways — be to -

B Amaj7 E

- ge - ther, — till the end of time...

Bridge:

G D

Well may-be I, I need a lit-tle love, — yeah, —

G D

and may-be I, I need a lit-tle care, — and may-be

B \flat

F



G

C

D7sus4

D7



Chorus:

G

D/F#

Em



Am

D



Bm Em

words, they could change our lives for - ev - er, _____ and I

Am D F D7/9

prom-ise you that we will al - ways_ be to - ge - ther, oh. _____

G D/F# Em

I love you, _____ please say you

Am D C

love me too, please, please say you love me

G Em7

too. Do, do, do, do, do, — do, do, do, do, do, —

Detailed description: This system contains the first two measures of the piece. The guitar part features chords G (x2320) and Em7 (022042). The vocal line starts with a rest followed by a series of notes. The piano accompaniment consists of chords in the right hand and a rhythmic bass line in the left hand. The lyrics are "too. Do, do, do, do, do, —" for the first measure and "do, do, do, do, do, —" for the second.

Am D

do, do, do, do, do, — do, do, do, do, do, —

Detailed description: This system contains the next two measures. The guitar part features chords Am (022100) and D (xx0232). The vocal line continues with the same note sequence. The piano accompaniment follows the same pattern. The lyrics are "do, do, do, do, do, —" for both measures.

G Em7

Do, do, do, do, do, — do, do, do, do, do, —

Detailed description: This system contains the next two measures. The guitar part features chords G (x2320) and Em7 (022042). The vocal line continues with the same note sequence. The piano accompaniment follows the same pattern. The lyrics are "Do, do, do, do, do, —" for both measures.

Am D

do, do, do, do, do, — do, do, do, do, do, — *repeat and fade*

Detailed description: This system contains the final two measures. The guitar part features chords Am (022100) and D (xx0232). The vocal line continues with the same note sequence. The piano accompaniment follows the same pattern. The lyrics are "do, do, do, do, do, —" for both measures, with the instruction "repeat and fade" at the end of the second measure.

IF THAT'S WHAT IT TAKES

Words and Music by
J.J. Goldman and Phil Galdston

Moderate rock ♩ = 88

N.C.



1. You're the brav-est of hearts,
2. You can sleep in my arms, _

Asus4



A



Bm



A/C#



— you're the strong-est of souls, _
— you don't have to ex - plain _

D



A



Bm



you're my light in the dark, _ you're the place I call home. _
when your heart's cry - ing out, _ ba - by, whis-per my name, _

G D/F#

You can say it's all right, — but I know that you're break-
'cause I've reached out for you — when the thun-der is crash-

Em Asus4 A D

- ing up_ in - side. I — see it in your eyes, ev - en you face the night.
- ing up_ a - bove, you've_ giv-en me your love. When you smile like the sun_

A/C# Bm G A

— a - afraid and a - lone, — that's why I'll be_ there.
— that shines through the pain, — that's why I'll be_ there.

E



B/D#



When the storm ris - es up, _____ when the sha - dows de - scend, _____
 When the storm ris - es up, _____ when the sha - dows de - scend, _____

F#m



A



B



E



— ev - ery beat of my heart, _____ ev - ery day with - out _____ end, _____ ev - ery sec - ond I live, _____
 — ev - ery beat of my heart, _____ ev - ery day with - out _____ end, _____ I will stand like a rock, _____

B/D#



F#m



A



B



_____ that's the prom - ise I make, _____ Ba - by, that's what I'll give, _____ if that's what it _____ takes, _____
 _____ I will bend till I break, _____ till there's no more to give, _____ if that's what it _____ takes, _____

1.
Cadd9

D



if that's what it takes, _____

2.

E

B

F#m

I will risk ev - ery - thing, I will fight, I will bleed, I will lay down my life,

A

B

E

if that's what you need, ev - ery sec - ond I live,

B

F#m

that's the prom - ise I make. Ba - by, that's what I'll give,

A

B

Cadd9

D7sus4

D7

if that's what it takes.

G D Am

Through the wind and the rain, through the smoke and the fire, when the fear rises up,

C D7 G D

— when the wave's ever higher, I will lay down my heart, my body, and soul,

Am C D7 G

— I will hold on all night and never let go, every second I live,

D Am C

repeat ad lib. and fade
D7 C

— that's the promise I make. Ba-by, that's what I'll give, if that's what it takes.

Verse:



F



nights when the wind_ was so cold_____ that my bod - y froze in bed, if I just
 (2.) emp - ty threats and_ hol-low lies,_____ and when - ev-er you tried to hurt me, I just

Am



Dm



F



Gsus4



G



lis - tened to it, right out - side the win - dow. There were
 hurt you ev - en worse, and so much deep - er. There were

C



F



Dm



Em



days when the sun_ was so cruel_____ that all the tears turned to dust, and I just
 hours that just went_ on for days,_____ when a-lone at last, we'd count up all the

Am7



Dm



F



Gsus4



G



knew my eyes were dry - ing up for - ev - er.
 chan - ces, that were lost to us for - ev - er,

Em Am F G7 C Em Am

I fin-ished cry-ing in the in - stant that you left, and I can't re-mem-ber where, or when, or
but you were his-tory with the slam-ming of the door, and I made my-self so strong a - gain some -

F Gsus4 G Em Am F G

how, _____ and I ban-ish-ed ev - ery mem - ory you and I _____ had ev - er
- how, _____ and I nev - er wast - ed a - ny of my time _____ on you since

allargando F G11 **Chorus: a tempo** C

made, then, but when you touch me like this, _____ and you
but if I touch you like this, _____ if you

G/B Am7 Dm7 F G7

hold me like that, _____ I just have to ad - mit _____ that it's all _____ com-ing back _____ to me, when I
kiss me like that, _____ it was so long a - go, _____ but it's all _____ com-ing back _____ to me, if you

C G/B Am7 Dm7

touch you like this, — and I hold you like that, — it's so hard to be - lieve, — but it's all —
touch me like this, — if I kiss you like that, — it was gone with the wind, but it's all —

F G7 C F G

— com - ing back — to me, it's all com - ing back, — it's all com - ing back to me now. — } There were
— com - ing back — to me, it's all com - ing back, — it's all com - ing back to me now. — }

Am F Em F Am F

mo - ments of gold, and there were flash - es of light, — there were things I'd ne - ver do a - gain, but then, they'd

Em F Am Em7 Am F

al - ways seemed right. — There were nights of end - less plea - sure, it was more than a - ny laws al - low, —

Dm G13sus4 C

ba - by, ba - by, if I kiss you like this, — and if you
Ba - by, ba - by, ba - by when you touch me like this, — and when you

G/B Am7 Dm7 F G

whis-per like that, — I was lost long a - go, — but it's all — com-ing back — to me. If you
hold me like that, — it was gone with the wind, but it's all — com-ing back — to me. When you

C G/B Am7 Dm7

want me like this, — and if you need me like that, — it was dead long a - go, — but it's all —
see me like this, — and when I see you like that, — then we see what we want — to see, all —

F G Am7 Dm7 F G

— com-ing back — to me. It's so hard to re - sist, — but it's all — com-ing back — to me. I can
— com-ing back — to me, the flesh and the fan - tas - ies, all — com-ing back — to me. I can

Am7 Dm7 F G7 1. Am G/B

bare-ly re-call, but it's all com-ing back to me now,
bare-ly re-call, but it's all com-ing back to me now.

Fadd9/C Em Am G/B

but it's all com-ing back.

Fadd9 Dm 2. F

2. There were those

C F C F

Dm7



F



G11



If you for-

a tempo



G/B



Am7



-give me all this, — if I for - give you all that, we for - give and for - get, — and it's all —

F



G



C



G/B

— com-ing back — to me, when you see me like this, — and when I see you like that, — we see

Am7



Dm7



F



G7



Am7



Dm7



just what we want — to see, all — com-ing back — to me, the flesh and the fan - tas-ies, all —

F G Am7 Dm7 F G7

— com-ing back_ to me, I can bare-ly re-call, but it's all com-ing back_ to me

C F C

now, and when you kiss me like this, —

F C F

and when I touch you like that, — and if you

C F/A C

do it like this, — and if we ...

MAKE YOU HAPPY

Words and Music by
Andy Marvel

Freely

Gm7add4

Fadd9/A

E|maj9

Ooh, _____
yeah, _____

mf

This system features a vocal line and a piano accompaniment. The vocal line starts with a whole rest, followed by a half note 'Ooh,' and another whole rest, then a half note 'yeah,'. The piano accompaniment consists of two staves. The right hand has a series of chords and triplets, while the left hand has a simple bass line with triplets. The tempo is marked 'Freely'.

Fadd9

Gsus4

no more sad - ness,

This system continues the vocal and piano parts. The vocal line has a whole rest, followed by a half note 'no', a quarter note 'more', a quarter note 'sad -', and a half note 'ness,'. The piano accompaniment continues with similar patterns of chords and triplets.

Moderate reggae $\text{♩} = 88$

Gm

Dm

Gm

Dm

ah, _____
ah, _____
ah, _____

This system features a vocal line and a piano accompaniment. The vocal line has three whole rests, each followed by a half note 'ah,'. The piano accompaniment consists of two staves. The right hand has a series of chords, and the left hand has a simple bass line. The tempo is marked 'Moderate reggae' with a quarter note equal to 88.

Cm7



Gm/Bb



ah,

ooh.

1. I wan-na be the

Verse:

Gm



Dm7



Gm



one to make_ you hap - py, I wan - na be the one to give_ you hope,_
 (2.) place where dreams can hap - pen, I wan - na find a love who'll take_ me there,

Dm7



Cm7



_ but in these days of con - scious liv - ing, we've got to take_ it slow_
 _ and in your eyes I see_ a vi - sion that makes me want_ to care,_

Gm/Bb



Gm



Dm7



_ you can't be sure of who_ you've met, _ you just don't
 _ and if two peo - ple can_ a - gree _ that on - ly

Gm



Dm7



Cm7



know what you might get, 'cause in these cra - zy times we're liv -
love can set them free, then to - ge - ther let us make.

- ing, love can turn in - to re - gret, but you
— a world of which oth - ers on - ly dream, and you

— could be the one to change my point of view,
— can be the one to make it all come true,

— it's all up to you. Give you
— so what you gon - na do? I'll give you

D7#9



Ebmaj9



Ebmaj7



Ebmaj9



F13sus4



Chorus:

Gm7



Dm7



Ebmaj7



Bbmaj7



love with-out the pain, show you light be-yond the rain, gon-na make you hap-

- py, gon - na make you hap - py now.

There'll be days when things go wrong, I'll be there to make you strong.

— gon - na make you hap - py,

gon - na make you hap -

1.

E \flat F Gsus4 G

- py. _____

N.C.

2. I wan-na find a - py now... Some days the sun don't wan - na shine...

Bridge: Gm7 3tr

Dm7 Ebmaj7 Bbmaj7 Cm7 3tr

— and I'll be yours and you'll be mine, — gon-na make you hap - py, hap -

E \flat F Gm7 3tr

- py, ah. _____ I ain't the kind to be un - true, —

Dm7 EImaj7 BImaj7

I wan - na spend my life with you, gon - na make you hap -

Cm7 Eb F

- py, yeah, make you hap - py, yeah, yeah,

Gsus4 N.C.

yeah, ooh.

Gm Dm7 Gm Dm7

Gon-na make you hap - py, make you feel so good,

Gm



Dm7



Gm



Dm7



hap - py in love.

Love _____ with - out the pain,

light be - yond _____ the rain. _____

Gon-na make you feel so _____ good, _____

Gm



Dm7



Gm



Dm7



_____ hap - py,

yeah, yeah, yeah, yeah.

E1maj7



It's _____ all up _____ to you. _____ Give you

Gm7



Dm7



Ebmaj7



Bbmaj7



love with-out_ the pain,___ show you light be - yond the rain,___ gon-na make you hap-
sun don't wan - na shine,___ and I'll be yours and you'll be mine,___ gon-na make you hap-

Cm7



Eb



F



- py,___ gon-na make you hap - py now... There'll be
- py,___ make you hap - py now. I ain't the

Gm7



Dm7



Ebmaj7



Bbmaj7



days when things go wrong,___ and I'll be there to keep_ you strong,___ gon-na make you hap-
kind to be_ un - true,___ wan - na spend my life_ with you,___ gon-na make you hap-

Cm7



Eb



F



repeat and fade

- py,___ make you hap - py now... Some days the
- py,___ make you hap - py, yeah. Give you

SEDUCES ME

Words by Dan Hill
Music by Dan Hill and John Sheard

Slowly ♩ = 69

Gm



D7sus4/G



Gm



Ev-ry-thing you

mp

Detailed description: This system contains the first four measures of the piece. It features a vocal line in treble clef and a piano accompaniment in bass clef. The key signature has two flats (Bb and Eb), and the time signature is 12/8. The piano part begins with a melodic line in the right hand and a bass line in the left hand. The vocal line starts with a whole rest in the first measure, followed by a quarter note in the second measure, and then a quarter note in the third measure. The lyrics 'Ev-ry-thing you' are aligned with the vocal notes.

Gm



D7sus4



D7



are,

ev-ry-thing you'll be,

touch-es the cur-rent of

Detailed description: This system contains measures 5 through 8. The piano accompaniment continues with a steady bass line and a melodic line in the right hand. The vocal line has a whole note in measure 5, followed by a quarter note in measure 6, and then a quarter note in measure 7. The lyrics 'are, ev-ry-thing you'll be, touch-es the cur-rent of' are aligned with the vocal notes.

Bb6/F



Em7#5



love

so deep in me.

Ev-ry sigh in the

Detailed description: This system contains measures 9 through 12. The piano accompaniment continues with a steady bass line and a melodic line in the right hand. The vocal line has a whole note in measure 9, followed by a quarter note in measure 10, and then a quarter note in measure 11. The lyrics 'love so deep in me. Ev-ry sigh in the' are aligned with the vocal notes.

E^bmaj7

D7sus4



D7



night,

ev-ery tear that you cry,

se-duc - es

Gm



D7sus4



D7



me,

oh, _____

and all that I

Gm



D7sus4



D7

am,
world,and all _____
ev-ery voice in the night,means noth- ing at all,
ev-ery lit - tle thing ofB^b6/F

Em7/5



beau-ty _____

if you can't be with me, _____
comes shin-ing through your eyes, _____Your most in-no-cent
and all

EImaj7

D7sus4

D7

— kiss, or your sweet-est car - ess se - duc - es
that is you be - comes part of me too, 'cause all that you do se - duc - es

Gm

Gm/A

Gm/Bb

D7

D7/F#

me, I don't care a - bout to -
me, and if I should die to -

Gm

Gm/Bb

D7

D7/F#

- mor - row, I've giv-en up on yes - ter -
- mor - row, I'd go down with a smile

Gm

Bb6/F

A7

A7/C#

- day, here and now is all... that
on my face... I thank God I've ev - er

Dm

Dm/C

E7/B

E7



1. A7

2. A7



Gm

D7sus4

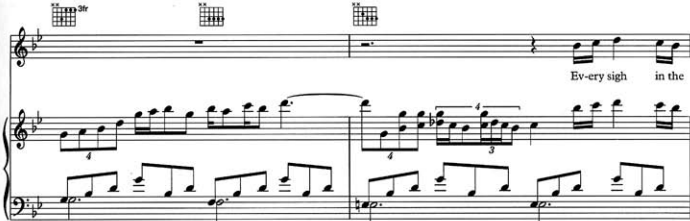
D7



Gm

B♭6/F

Em7/5



Emaj7



D7sus4



D7



night, — ev-ery tear that you cry, se-duc - es

Gm



Gm/F#



Bb6/F



Em7-5



freely

me, — oh, oh, — se-duc - es me, and all that you

Cm7



D7



Gmadd9



Gm9



do — se-duc - es me. —

ALL BY MYSELF
BECAUSE YOU LOVED ME
CALL THE MAN
DECLARATION OF LOVE
DREAMIN' OF YOU
FALLING INTO YOU
FLY
I DON'T KNOW
I LOVE YOU
IF THAT'S WHAT IT TAKES
IT'S ALL COMING BACK TO ME NOW
MAKE YOU HAPPY
SEDUCES ME



0 29156 30262 2



WARNER BROS. PUBLICATIONS
18000 NW 48th Avenue • Miami, Florida 33014
A Warner Music Group Company

IMP
International Music Publications Limited
Southend Road, Woodford Green, Essex IG8 8HN, England

ISBN 1-57623-895-4



9 781576 238950

\$18.95
in U.S.A.
\$26.50
in Canada
4813